

CEILING LED PANEL 600 x 600

Catalog Home by NEOLUX > p.44

Provide an optimum visual
comfort.



⊕ **Aesthetic lighting solution.**
**Tempered safety glass for public
areas.**

Among applications:

- Workspaces and offices
- Lobbies
- Public areas: schools, administrative centers, sport centers,...
- Showrooms
- Laboratories



MORE INFORMATION...

- Replacement solution to fluorescent tubes panels
- Single reference for 2 different mountings:
 - Recessed mode in a false ceiling
 - Suspended mode by slings
- Also available in dimmable version
- Optimum eyestrain tolerance level compared to fluorescent tube.

ADVANTAGES

- ✓ Homogeneous colour temperature and stable in time.
- ✓ Its thinness allows easy mounting to the ceiling.
- ✓ Very simplified connection and very fast mounting.
- ✓ Smart design and tempered safety glass for public areas.
- ✓ Very good return on investment: no maintenance, estimated life of 50,000 hours, very low power consumptions.



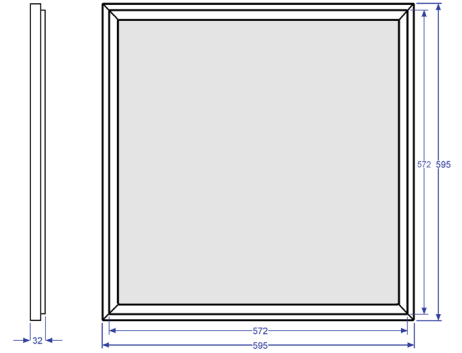
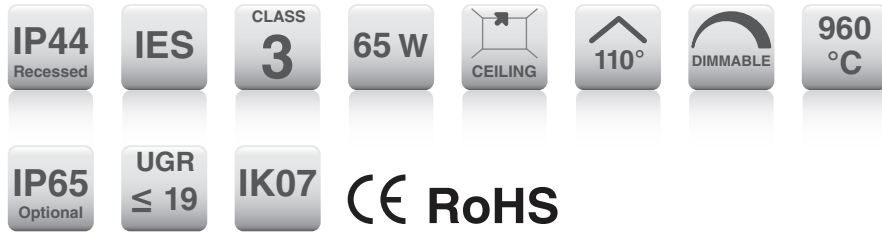
▼ Perfect homogeneity of the luminous flux



▼ Excellent luminous efficacy for public areas

CEILING LED PANEL 600 x 600

Provide an optimum visual comfort.



Dimensions

TECHNICAL SPECIFICATIONS

Environment

▶ Operating temperature	-40 °C to 50 °C
▶ Relative humidity	0 % to 60 %

Dimensions

▶ Length	595 mm
▶ Width	595 mm
▶ Depth	32 mm
▶ Diameter	_____
▶ Height	_____

Weight

▶ Weight	5 kg
----------	------

Housing / Finish

▶ Material	Aluminum
▶ Finish	Brushed aluminium
▶ Light source envelope	Face : tempered safety glass

Electrical specifications and connection

▶ Power consumption ⁽¹⁾	65 W
▶ Power supply	120-220 VAC 50/60 Hz
▶ Connector type	_____
▶ Supplied cable	_____
▶ Cable specifications	_____
▶ Length of supplied cable	_____
▶ Integrated power supply	No

Installation

▶ Recessed in a false ceiling	No tools required
▶ Suspended by slings	Supplied by NEOLUX

LED source specifications

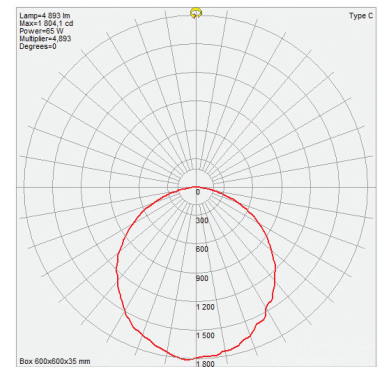
▶ Number of LED	840
▶ LED model	SMD3528
▶ Individual LED power consumption	0.072 W
▶ Available colour	_____

Optical specifications

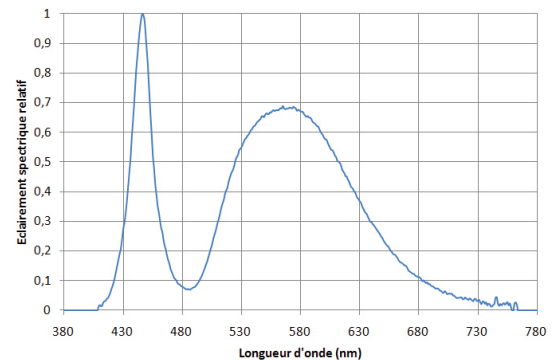
▶ Colour temperature	CW (6 000 K) / NW (4 500 K) / WW (3 000 K)			
▶ Luminous efficacy	75 lm/W			
▶ Luminous flux ⁽¹⁾	4 900 lm			
▶ General C(olour) R(ending) I(ndex)	75			
▶ Expected lifetime (70% efficacy point)	50,000 hours			
▶ Illuminance ⁽¹⁾	Distance	1 m	2.5 m	3.5 m
	Measured value	1 492 lx	250 lx	147 lx

Product warranty

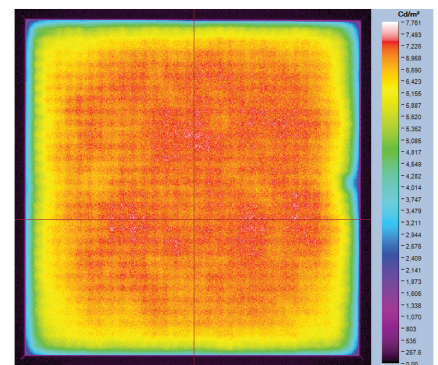
▶ Warranty	1 year
------------	--------



Luminous intensity distribution



Spectral power distribution



Luminance uniformity

Technical specifications measurement performed in January 2011 by NEOLUX photometry laboratory.

⁽¹⁾ Measurement tolerance $\pm 10\%$